



# The Westfield Philatelist

Newsletter of the Westfield Stamp Club  
American Philatelic Society Chapter #540  
American Topical Association Chapter #113

Volume 5 Number 5 May/June 2012

## Calendar of Events

May 24 - Professor A. Victor Segno Revisited: Still Selling Good Vibrations for Fun and Profit

By Edward J.J. Grabowski

An update on this turn of the century charlatan, with new Segno covers from an ever-widening group of countries, Segno advertising material and a letter from the Postmaster of LA to the Bishop of LA about Segno's activities.



June 28 - National Identity – The Stamps of Series 1902

By Roger S. Brody

A presentation about the background of the first stamp series designed entirely by the Bureau of Engraving and Printing.

January 1903 (Scott 304)



## A Philatelic Quiz

Q1. What is the connection between Herbert Hoover and Georg Bauer Agricola, a sixteenth century physician and the father of mineralogy?

Q2. Between 1930 and 1947 this region in northeastern South America overprinted some issues of French Guiana with its own territorial name. Can you identify it?

Q3. After leaving the Presidency he became a Yale law professor only to be appointed Chief Justice of the Supreme Court? His family name lives on in some labor strikes.

Q4. The last signer of the Declaration of Independence died in 1832. He has been commemorated by the United States Post Office. Do you know who he is?

Q5. As Herman Herst, Jr. wrote: "The history of the names of countries that have issued stamps makes an interesting study.... As an example, what country's name comes from the Arabic *Jabal al Tariq*?"

## Upcoming Stamp Shows

### NOJEX 2012

A World Series of Philately Show

May 25–27, 2012

Meadowlands Crowne Plaza Hotel  
Two Harmon Plaza  
Secaucus, NJ 07094  
201-348-6900

Thirty-four dealers  
200 frames of exhibits

Show theme:  
**100<sup>th</sup> Anniversary of the inaugural voyage and sinking of the Titanic.**  
[www.nojex.org](http://www.nojex.org)

### National Topical Stamp Show 2012

A World Series of Philately Show

June 22-24, 2012

Lancaster Host Resort & Convention Center  
2300 Lincoln Hwy East (Rt. 30), Lancaster, PA 17602  
717-299-5500

Twenty-seven dealers  
Exhibits, Amish-related activities

First Day Ceremony for the Sailboats 32¢ forever postal card and a First Day of Issue for the second set of Scenic American Landscape picture postal cards.

Show theme:  
**Lancaster — More Than You Think**  
[www.americantopicalassn.org](http://www.americantopicalassn.org)

**Editor**

Frederick C. Skvara  
PO Box 6228

Bridgewater, NJ 08807

Tel/Fax: 908-725-0928

email: fcskvara@optonline.net

**The Westfield Stamp Club**

**President**

Nicholas Lombardi

**Vice President**

Edward J.J. Grabowski

**Secretary**

Tom Jacks

**Treasurer**

Gary Wayne Loew

**Board of Governors**

John Crout

Allan Fisk

Gary Wayne Loew

Richard Nazar

Steven J. Rod

A. Warren Scheller

Frederick C. Skvara

K. David Steidley

Meetings are held at 8:00PM on the fourth Thursday of the month except for November (third Thursday) and July and August (summer recess). The club meets in the Community Room of the Westfield Town Hall located in the center of Westfield at 425 East Broad Street.

Dues are \$8.00 per membership year which runs from September 1 to August 31.

The club newsletter will be published every two months from September to June.

For information visit  
our website

[www.westfieldstampclub.org](http://www.westfieldstampclub.org)

or call

Nick Lombardi

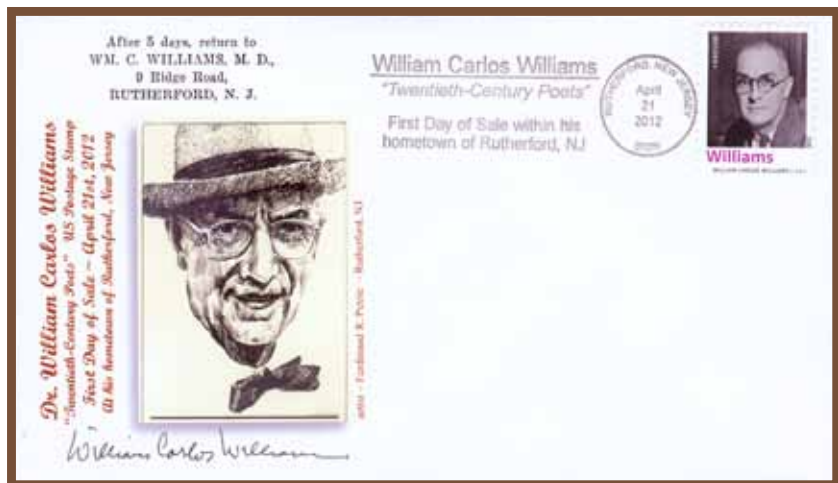
908-233-3045

## William Carlos Williams

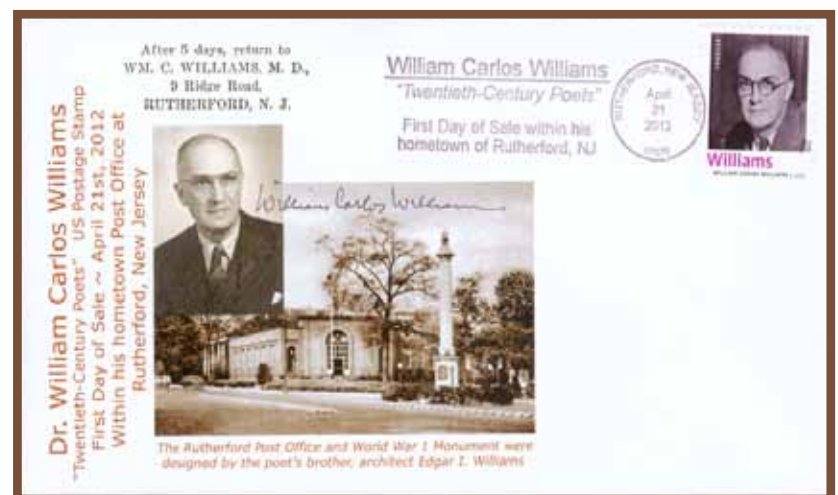
By Frederick C. Skvara

On April 21, 2012, the United States Postal Service issued a pane of twenty Forever stamps for the first-class rate commemorating Twentieth-Century Poets. One of the poets honored was a New Jersey native, William Carlos Williams whose poems written in original meter used common language and imagery. Much of his writing was inspired by his local surroundings including the five-part epic poem, *Paterson*, written over a twelve year period from 1946 to 1958. In 1950 he won the National Book Award for Poetry and in 1963 the Pulitzer Prize for Poetry for *Pictures from Brueghel and Other Poems*.

Born on September 17, 1883, in Rutherford, New Jersey, he obtained a doctorate in Medicine in 1906 from the University of Pennsylvania, studied pediatrics in Leipzig, and returned in 1910 to Rutherford practicing general medicine and pediatrics. He remained in Rutherford for the rest of his life dividing his time between medicine and writing. In 1948 he suffered the first of several heart attacks and strokes that led to his declining health. Williams died on March 4, 1963, at his home in Rutherford at the age of seventy-nine.



William Carlos Williams portrait (mid -1990s) by Rutherford artist, Ferdinand R. Petrie (1925–2007)



William Carlos Williams photograph with photograph of Rutherford Post Office designed by architect Edgar I. Williams, the younger brother of William Carlos Williams. The cachet also shows the Rutherford World War I Monument.

Cachets by William Neumann Photography. (FOTOGBILL@aol.com)

# Commodore Matthew Calbraith Perry and the Japan Centennial

By Robert Hassard

History tells us that for several centuries, beginning in 1543, Portuguese, Dutch, English, Russian, French and American attempts to open trade with Japan all met with failure until 1854 when trade with Japan was finally established by the United States through the efforts of Commodore Matthew Calbraith Perry (1794–1858)<sup>1</sup>. But let us see how Commodore Perry approached the problem that seemed almost impossible at the time.

The American whaling industry, that began in the late eighteenth century, decreased in importance with the drilling of the first commercial oil well in Titusville, Pennsylvania (Fig. 1) in the summer of 1859 by Colonel Edwin L. Drake. That well opened up a new era and whale oil became less important for use in the lubrication of machinery and lighting homes and businesses. Up to then Yankee whalers sailing from Nantucket, Newport, New Bedford, and elsewhere, explored the Atlantic and Pacific oceans in pursuit of whales (Fig. 2). The voyages would often last for 3 years, but it could be up to 8 years before they returned to their home ports. Japan was often inhospitable to foreign ships during this period and when American whalers, in need of water and other provisions, approached Japan they were told to leave and risked the possibility of capture and confinement by the Japanese. Shipwrecked sailors off the shores of Japan didn't fare any better and could be taken prisoner and subjected to harsh conditions including torture. Such was the fate of the survivors of the American whaler *Lawrence* after their ship was wrecked in 1846 off the coast of Japan. Seized by the Japanese they were imprisoned for seventeen months and subjected to insults and beatings.

Besides the question of opening trade with Japan, we faced the necessity of protecting American whalers. President Fillmore (1800–1874) (Fig. 3) took action and sent Commodore Perry to Japan with a letter dated November 13, 1852, and addressed to the Emperor of Japan. The letter asked that Japan open its lands to trade and to treat with kindness any American sailors that it came in contact with. On July 8, 1853, Commodore Perry arrived in Edo Bay<sup>2</sup>, delivering President Fillmore's letter and one from himself as well (Fig. 4). After staying less than ten days he sailed to the China coast on July 17 after giving full warnings to the Emperor that he would return later with a larger fleet to discuss the Japanese decision. Perry returned in February 1854 with a state of the art flotilla putting serious pressure on Japan for formal articles of convention between the United States and Japan ensuring the protection of American sailors and opening trade with the United States. The Tokugawa shogunate<sup>3</sup> agreed to all American demands and signed the Treaty of Kanagawa with Commodore Perry on March 31, 1854.



Fig. 1 Centenary of completion of oil well in Titusville, Pennsylvania. United States 1959 (Scott 1134)



Fig. 2 Whaling ship *Charles W. Morgan* launched in 1841 from New Bedford, Massachusetts. United States 1971 (Scott 1441)



Fig. 3 Millard Fillmore (13<sup>th</sup> President, 1850–53). United States 1938 (Scott 818)



Fig. 4 Centennial of the opening of Japan. Design shows Commodore Matthew C. Perry's ships at night on his first anchorage off Edo Bay in 1853. Mount Fuji is in background. United States 1953 Scott (1021)

## References

<sup>1</sup> Commodore Matthew Perry came from a family who had five sons in the United States Navy. His older brother was Commodore Oliver Hazard Perry (1785–1819), who defeated the British in the Battle of Lake Erie on September 10, 1813, during the War of 1812. Several United States stamps, beginning with Scott 144, were issued in his name for his meritorious victory. His father was Captain Christopher Raymond Perry, who saw action in the American Revolutionary War while his mother was Sarah Wallace Alexander Perry, a great, great, great niece of Sir William Braveheart Wallace of Scotland (1272–1305), one of Scotland's heroes in the Wars of Scottish Independence. He is the subject of works by Sir Walter Scott and the film *Braveheart*.

<sup>2</sup> Edo is the former name for Tokyo and Edo Bay is the former name for Tokyo Bay. From 1603 to 1868 it was the seat of power of the Tokugawa shogunate that ruled Japan during that period.

<sup>3</sup> The Tokugawa shogunate was a feudal regime whose shōgun ("great general") ruled Japan from Edo during the period mentioned above. Although President Fillmore and Perry's letters were addressed to the emperor, they were received by the shōgun.

## Answers – March/April Philatelic Quiz

Q1. In 1923 this place was declared an international zone by Great Britain, France and Spain with stamps issued by all three countries for use in that zone. It was annexed by Morocco in 1957.

Ans. **Tangier**

The port of Tangier in northern Morocco lies on the Strait of Gibraltar and was part of the French Protectorate of French Morocco from 1912 to 1956. Since its beginning as a Phoenician trading post in the fifteenth century B.C., Tangier has had a varied history including its status, with the surrounding suburbs, as an international zone from 1923 to 1956. With the recognition of Morocco's independence in 1956, the international administration (France, Great Britain and Spain) transferred control of Tangier to Morocco. Stamps of France, Great Britain and Spain were overprinted with "Tangier" for use in the zone.



British Offices Abroad - Morocco 1937 (Scott 516)

Q2. What island in the North Sea moved from Danish to British to German hands? It was the site of a major German naval base in World War II.

Ans. **Helgoland (Heligoland).**

Helgoland is a tiny island in the North Sea in the waters known as the German Bight only 28 miles off the coast of Germany. With the 1814 Treaty of Kiel that ended hostilities between Denmark and Sweden, Helgoland was formally ceded to Great Britain. In 1890 it was absorbed into the German Empire and is now called Heligoland, part of Schleswig-Holstein in the Federal Republic of Germany. Prior to World War I Germany fortified the island with large guns and established a naval base. Some of the fortifications were destroyed following Germany's defeat in the war, but as World War II approached, the Nazis began construction of a new submarine base. Allied bombardments during World War II were intense and by 1945 the island was left uninhabitable and under British control. In 1952 the island was returned to Germany and the inhabitants, who had been removed from the island previously, returned and resumed farming and fishing. Stamps were issued between 1867 and 1888, but were reprinted between 1875 and 1895.



Heligoland. Germany 1940 (Scott B176)



Coat of Arms. Heligoland 1877 (Scott 20) [probable reprint]

Q3. What region in southeastern Albania issued stamps in 1914 under a provisional government before uniting with Greece and then returning to Albania?

Ans. **Epirus**

Epirus lies on the Balkan Peninsula across the northwestern frontier of modern Greece and the southeastern frontier of Albania. Between 1912 and 1914 the region was occupied by the Greek Army, but in 1914 the local population established the Autonomous Republic of Northern Epirus and issued its own stamps. Greece reoccupied the country in October 1914 and it became a department of Greece using overprinted Greek stamps. In 1916 Greece withdrew and the northern area was formally ceded to Albania.



Infantry man with rifle. Epirus 1914 (Scott 8)

Q4. What does the word 'ZIP' represent and what was the first United States commemorative stamp to have the word printed in its sheet margin?

Ans. **Zone Improvement Plan.**



The ZIP program was established in 1963 and was retired twenty-five years later in 1983. His first appearance in the selvage of a United States commemorative stamp was in January 10, 1964, when he appeared on the pane of the 5¢ Sam Houston stamp (Scott 1242). The full story of the Zip Code can be found at the National Postal Museum's web site: [www.postalmuseum.si.edu/zip-codecampaign](http://www.postalmuseum.si.edu/zip-codecampaign).



1974 (Scott 1511)

Q5. What was the first United States stamp printed on the Giori press?

Ans. **The 1957 48-star Flag commemorative (Scott 1094)**

The Giori press has been used by many countries for the security printing of currency and postage stamps. It was developed by Gualtiero Giori of Milan, Italy, around 1947 and two years later the first stamp to be printed on a Giori press was issued by Argentina on November 19, 1949, for the 75<sup>th</sup> anniversary of the Universal Postal Union (Fig. 1). It is a 25c stamp printed in two shades of green.

[continued on page 5]



Fig. 1 Argentina 1949 (Scott 586)



Fig. 2 United States 1957 (Scott 1094)



Fig. 3 United States 1957 (Scott 1096)



Fig. 4 United States 1957 (Scott 1098)

The “Old Glory” flag stamp issued on July 4, 1957, (Fig. 2) printed in dark blue and deep carmine, was the first United States postage stamp printed on the multicolor intaglio Giori printing press at the Bureau of Engraving and Printing (BEP). The press was purchased from Organisation Giori headquartered in Lausanne, Switzerland, a coordinating group that had been formed in 1952. It was built by Koenig and Bauer, A.G. based in Wurzburg, Germany.

The second commemorative stamp printed on the Giori press, the 8c Ramon Magsaysay stamp issued on August 31, 1957 (Fig.3) in the Champions of Liberty series, utilized three colors, but needed two plates to produce the desired effect. The first stamp take full advantage of the three-color, single-plate process that the Giori press was capable of was the Whooping Cranes commemorative issued on November 22, 1957 in the Wildlife Conservation series (Fig.4).



## Auction Lots for Thursday, May 24, 8 PM Auction!

Viewing from 7:30 PM til 7:55 PM

### Donation Lots (Lots 1 through 6) The club gets to keep all the money!

- Lot #1D **Complete Set of Six Volumes A thru Z – 2010 Scott Catalogues** – 6 pristine volumes, as new. This identical lot is currently on sale on eBay for prices between \$150 and \$175. We need the money for a new projector, so please bid generously, because we are being crazy and starting the bidding at \$30.
  
- Lot #2D **USPS Top Cards** – This is a gorgeous lot of very hard to find “top Cards” found on the top of shrink wrapped “bricks of stamps” packaged by the printer. 25 different stamps issues – 25 cards, which we note are selling for \$8.45 and \$9.45 on eBay (search “top cards”). That makes the retail value of this lot \$200. ++. . We need the money for a new projector, so please bid generously, because we are being crazy and starting the bidding at \$8.45
  
- Lot #3D **Legends of Baseball** – A USPS shrink-wrapped product originally sold for \$8.95. Twenty postal cards. Our reserve is the \$4.00 face value.
  
- Lot #4D **Harris “Statesman Deluxe Album”** (1983) Album in VF condition, we note about 200 stamps throughout. No reserve.
  
- Lot #5D **Harris “Senior Statesman” World Stamp Album (1982)** Album in VF condition, we note about 500 stamps throughout. Please inspect. Our reserve is \$5.00
  
- Lot #6D **Two soft cover Albums**, each with some stamps in them. One is Harris the other is Grossman. We love the title page in the Grossman with the zip code shown as 10,003. No reserve.

### United States (Lots 7 through 14)

- Lot #7 #65 - used on folded letter sheet postmarked 3/27/1870 – the stamp is brown!!! With an APEX Certificate! reserve is \$5.00
- Lot #8 #233 - 4-cent Columbian – nicely centered - top straight edge – no gum - nice color - 2012 Scott retail is \$60. no reserve
- Lot #9 #328 - 330 Set of 3 Jamestown – fine to very fine. The key 5-cent'er has fine centering, no perfs touch. The perfs touch on the 1-cent – light cancels. 2012 Scott retail is \$42.00 – no reserve.
- Lot #10 Four \$5 stamps – all very nice cancels. Look at these! - \$4. reserve
- Lot # 11 #492 - 2-cent vertical coil type III with APEX Certificate. F-VF, Light Hinge. Scott retail is \$9.00. Reserve is \$5.00
- Lot # 12 Booklet Panes – 17 different used panes, very hard to find in this condition. A great lot for the used US collector. Very high Scott retail value – please inspect the panes and the owners inventory. Reserve:
- Lot #13 #3649 “Masters of American Photography” This beautiful pane of 20 was quickly sold out when it went on sale June 13, 2002. reserve:\$7.00
- Lot #14 100 US Covers from the 1930's thru the 1960's – please inspect them carefully. A Very fine eclectic mix of US postal history. Estimated dealer bourse retail: \$150. + reserve: \$10.

### Worldwide (Lots 15 to 20)

- Lot #15 Zeppelin “Real Photo Post Card” interesting message – mailed from Germany to the US. Owner says eBay retail is \$20-\$25. Reserve is \$7.50
- Lot #16 Nudes! Nudes! Nudes! Lock the doors before our Auctioneer calls this lot. More than 200 stamps and souvenir sheets. The lot does not weigh much because no one is wearing clothing. Please inspect carefully. Scott retail is about \$35. reserve is \$5.00
- Lot #17 24++ Worldwide covers – quite a variety – postal history mavens should take the time to inspect carefully. No reserve
- Lot #18 The Santa Claus Cover Collection – You must see and inspect this fabulous album.. It's gorgeous. Reserve: \$15.00
- Lot #19 Scott's Stamp Monthly – the early years – 1927 – 1933 complete – please inspect and see the inventory. A priceless resource in amazing “as new” condition.
- Lot #20 A small lot of philatelic literature – see inventory – very useful for your library.

**Bring your duplicates to our May meeting.  
Sell and trade them from 7:30 to 8pm at the bourse session  
before the 8pm General Meeting.**